

PALM BEACH



EDUCATION



Education Program Guide 2011-2012

General Palm Beach Zoo Information

The Palm Beach Zoo is a non-profit zoological organization located at Dreher Park in West Palm Beach, Florida. The zoo is professionally accredited by the Association of Zoos and Aquariums and houses over 1,400 animals within 23 acres of lush tropical habitat. The mission of the Zoological Society of the Palm Beaches is to protect wildlife and wildlife habitat, and to inspire others to value and conserve the natural world. We advance our conservation mission through endangered species propagation, education, health and wellness, field research, and conservation medicine. Our sustainable and responsible business practices and local, national and global partnerships enable the Palm Beach Zoo to support national and international conservation, species survival, and habitat preservation.



ATTRACTIONS & AMENITIES

Malayan Tiger Cubs

Three male Malayan tiger cubs were born at the zoo on May 12th and 13th, 2011. This marks the first time in our history that tiger cubs were born at the zoo. Visit the zoo often and see these amazing tiger cubs grow up right before your eyes. You can also keep up with the cubs on our "Tiger Cub Cam" by visiting our web site at www.palmbeachzoo.org.



The Melvin J. and Claire Levine Animal Care Complex

Go behind-the-scenes and tour the nation's first LEED certified zoo animal hospital, the Melvin J. and Claire Levine Animal Care Complex. This state-of-the-art 10,000-square-foot "green" building includes the Salvatore M. Zeitlin Animal Hospital, the Alvin I. Brown Distance Learning Center and the Center for Conservation Medicine.



The Harriet W. & George D. Cornell Tropics of the Americas Exhibit

This breathtaking exhibit showcases the animals and native culture found in the Central and South American regions. Jaguars, bush dogs, Baird's tapirs, Patagonian caviés, capybaras and giant anteaters are just a few of the animals that make their home in this re-creation of a Central and South American rain forest. You will be enchanted by the Mayan pyramids, the sculptures, and the beautiful music.



Alvin I. Brown Distance Learning Programs

Visit the zoo right from your classroom through our Alvin I. Brown Distance Learning Programs. Students from anywhere in the world can now visit the Palm Beach Zoo and participate in live interactive education programs featuring animals, discussions, and exhibit and program videos. The Palm Beach Zoo is the first zoo in Florida to offer Distance Learning programs!



Koala Forest Exhibit

The zoo now features one of Australia's most popular marsupials, the koala! Are koalas related to bears? What do they eat? To find answers to these questions and to learn more about these fascinating animals be sure to see Oz and Abby our koala residents when you visit the zoo. This exhibit area also includes other wildlife such as New Guinea singing dogs, kookaburras, and tawny frogmouths.



Interactive Fountain

Children are welcome to play in the dancing waters while happy music plays for the entertainment of all. Changing tents are nearby, and pleasant seating is provided for those who wish to relax and watch as their delighted children frolic in the refreshing water jets. Don't forget to bring the kids' bathing suits when you visit the zoo!



Carousel

The magnificent carousel at the Palm Beach Zoo provides unforgettable experiences for children and a bit of nostalgia for grownups. Thirty-two colorful sculptures take children on thrilling rides while traditional carousel music plays. Discounted tickets are available for groups at the main entrance.



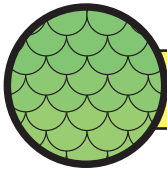
Tropics Café

The Tropics Café is a pleasant hideaway offering full-service dining in a unique air-conditioned facility with an Amazon Basin theme. The restaurant has a delightful menu to please every member of your group. For those seeking light refreshment, our concession stands offer cold drinks, ice cream, hot dogs and more. Restaurant seating closes at 3 p.m. The concession stands close at 4:30 p.m. Bag lunches are available for purchase for students and adults. Call (561) 533-0887 ext. 217 for further details.



This guide is printed on recycled paper. A green recycling symbol consisting of three chasing arrows forming a triangle.





PRICING & SCHEDULING INFORMATION

School and Group Admission Rates:

School and group rates are based on a minimum of 15 paying people. Please visit our web site at www.palmbeachzoo.org for admission and program fees or phone our education coordinator at (561) 533-0887 ext. 229 or email education@palmbeachzoo.org.

Making a Reservation:

Group Field Trip and Outreach Reservation forms are available online at www.palmbeachzoo.org under the Education section, or you can call (561) 533-0887 ext. 229 to register by phone. You can also download a reservation form from our web site and mail or fax it to the zoo. After we receive your reservation, you will receive an invoice confirmation which will be emailed or faxed 5-7 business days after the submission of your reservation form or phone reservation.

If you are visiting the zoo, please bring a copy of the invoice with you the day of your visit.

Arrivals and Payments:

Please go to the zoo's main entrance where an admissions staff person will greet you, count your group, and show your group leader where to make payment. You may pay by company check, cash, or credit card (excluding Discover). Payment is accepted ONLY upon entry into the zoo. Please note that we do not accept purchase orders for zoo visits or outreach programs. A \$50.00 non-refundable deposit is required at the time of booking for zoo class programs or guided tours reserved from June to August.

Late Arrivals and Cancellations:

If you are going to be late for a scheduled zoo class or guided tour please contact us as soon as possible at (561) 533-0887 ext. 229. Although we will do our best to accommodate your late arrival we may have to reschedule or cancel your program. If you must cancel or postpone your field trip please phone us at the number listed above or email: education@palmbeachzoo.org as soon as possible, so we can do our best to accommodate you.

Rainy Day/Severe Weather:

Please check the weather before you depart for the Palm Beach Zoo. The zoo is an outdoor facility and no refunds will be given once you have entered the zoo. If you need to cancel your reservation, please contact us to reschedule your visit.

WE DO NOT ISSUE RAIN CHECKS.

Bus Parking:

Bus parking is available ONLY in Dreher Park across the street from the zoo on the south side of Summit Boulevard. The paved bus lane at the main entrance of the zoo is designated for the drop off or pick up of group passengers.

Carousel:

The group rate for carousel tokens is \$1.00 each with a minimum purchase of 15 tokens. Tokens can be purchased at the main entrance.

Picnic Areas:

Only weekday school/youth groups are permitted to bring bagged lunches into the zoo. Picnic tables are available on a first-come basis. The zoo is not able to store your lunches during your visit. There are additional picnic areas available across Summit Boulevard in Dreher Park.

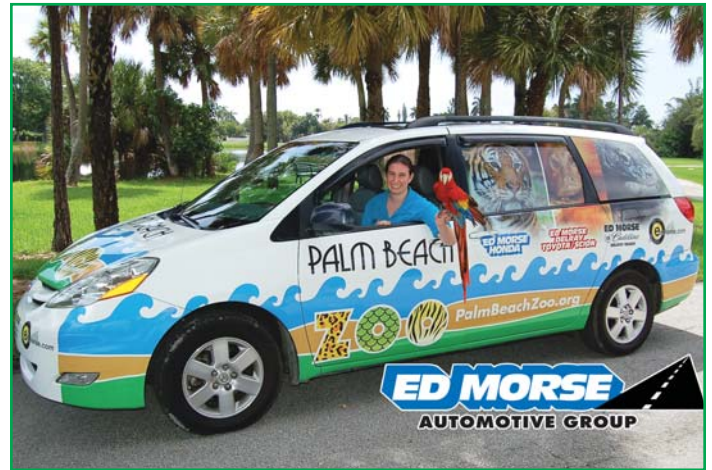
Lunch at the Zoo:

The Tropics Café offers a lunch menu and bag lunches for groups. To reserve your lunches in advance, call (561) 533-0887 ext. 217.

Zoo Souvenir Bags:

You can purchase pre-made souvenir gift bags for your group. Each gift bag contains souvenir items so your students will have something special to remember their day at the zoo. Your order will be ready at the Gift Shop the day of your visit. Please note: A minimum of 10 bags must be ordered. For more information please call (561) 533-0887 ext. 226.

Ed Morse ZOOmobile Outreach Program:



Let the zoo come to you! Our educators and animals will visit your school or special event and present an educational program which includes up-close animal encounters and amazing animal bio-facts. Any of the zoo class programs listed in this guide can be presented as an outreach program or we can customize a program to meet your specific needs. Programs last approximately 45 min.

One Presentation* \$185.00
Each Additional Presentation* \$75.00

*There will be a \$50 additional charge for each presentation to a group larger than 75 people. A mileage fee will apply after 25 miles. Payment in-full is due two weeks prior to the program. Please call us at (561) 533-0887 ext. 229 for more information.

Alvin I. Brown Distance Learning Program:

Visit the zoo right from your classroom through our Alvin I. Brown Distance Learning Programs. Students from anywhere in the world can now visit the Palm Beach Zoo and participate in live interactive education programs featuring animals, discussions, and exhibit and program videos. We offer single and multipoint connections and all of our programs are aligned to Florida's Next Generation Sunshine State Standards and the National Science Standards. Programs last approximately 45 minutes. For a complete listing of our distance learning programs and to reserve your program, please visit the Education page on our web site at www.palmbeachzoo.org. Please note that you must have video conferencing equipment at your school in order to participate. Please call us at (561) 533-0887 ext. 229 for more information.



One Presentation: \$85.00, Special Introductory Rate





ELEMENTARY ZOO PROGRAMS

Next Generation Sunshine State Standards

All education programs are developed according to the curriculum guidelines of the Next Generation Sunshine State Standards. Under the description of each program listed below, the benchmarks that are covered are in italics. Programs are approximately 45 minutes in length and present 3 - 4 different animals. Students may have the opportunity to touch at least one animal.

Pre-School Zoo Classes


Animal Discovery – Fuzzy fur, smooth scales, and flying feathers will all be featured in this program which will provide enriching animal discovery through hands-on learning.
II.A.1, VI.B.1, VI.B.3

K - 2nd Grades

Animal Adventures – Use your imagination and travel around the world with us. Meet some of the interesting animals that can be found in different lands and in your own backyard.
SC.K.N.1.2, SC.K.L.14.3, SS.K.G.1.2, SC.1.L.14.1, SC.2.G.1.3, SC.2.L.17.2

Habitat Sweet Home – What is a habitat? What do animals need to survive? Through up-close animal experiences, this program will explore different types of animal habitats and how animals are adapted for survival.
SC.K.N.1.2, SC.K.L.14.3, SC.1.L.14.1, SC.1.L.17.1, SC.2.L.17.1, SC.2.L.17.2

3rd - 5th Grades

Pond Study Lab – During your zoo visit you will grab a dip net and explore our pond community by collecting and identifying pond animals. We will also examine the role of each animal in the pond food web and some adaptations aquatic animals have for living in their watery environment. 
SC.3.L.15, SC.4.L.17.4, SC.4.N.1.5, SC.4.N.1.8, SC.4.P.8.2, SC.5.L.15

Food Chains – Whether producer, consumer, or decomposer, each species has its place in the food chain. Come meet some amazing animals and learn how each species is adapted to fill its particular role.
SC.3.L.17.2, SC.4.L.17.2, SC.4.L.17.3, SC.5.L.14.2

Florida Wildlife and Wetlands – Alligators, owls and panthers are all part of Florida's native wildlife. Through interactive teaching, animal encounters, and bio-facts, students will explore native species and wetland habitats.
SS.3.C.2.1, SC.4.L.17.4, SS.4.C.2.1, SC.5.L.17.1

Creatures Have Class – How do you label a lemur or categorize a crocodile? Through up-close animal observations, students will learn how to classify animals into groups and gain an understanding of their basic survival needs.
SC.3.L.15.1, SC.5.L.14.2, SC.5.L.17.1

Rain Forest Rescue – Time is running out; tropical rain forests of the world are vanishing by the second and need your help! This program will investigate the challenges of today's rain forest environments and includes encounters with our tropical animal ambassadors. In addition, students will engage in dynamic discussions and be empowered with ways to help preserve the world's tropical rain forests.
SS.3.C.2.1, SC.4.E.6.3, SC.4.L.17.4, SC.5.E.7.6, SC.5.L.17.1

Edging Toward Extinction – How do animals become endangered? What are zoos doing to save them? Join us as we investigate the causes and effects of endangered and extinct animals through face-to-face animal experiences and classroom discussions.
SS.3.C.2.1, SC.4.E.6.3, SC.4.L.17.4, SS.4.C.2.2, SS.4.C.2.3, SC.5.L.17.1



Visit us at www.palmbeachzoo.org



SECONDARY ZOO PROGRAMS

6 - 8th Grades

Classification Connection

"King Phillip Came Over For Good Soup." What does this phrase have to do with classification? This program will explore fun ways to understand how scientists classify all creatures and we will discover the meaning of "good soup" from a zoo point of view!
SC.6.L.15.1, SC.6.N.2.2

Animal Adaptations

Learn how living and non-living things interact in an ecosystem and how their roles affect their adaptations. How do animals use mimicry, camouflage and other adaptations to survive? Students will examine various animals to see how they are adapted to their environment.
SC.7.L.17.2, SC.7.L.17.3

6 - 12th Grades

Food Webs and Energy Transfer

Join us for an in-depth look at nature's food webs. Our animal ambassadors will provide living examples as we explore interactions between trophic levels, and discover how changes in one population can affect many others.
SC.7.L.17.1, SC.8.L.18.3, SC.912.L.17.5, SC.912.L.17.6, SC.912.L.17.9, SC.912.E.7.1

Wildlife Conservation

Wildlife and wild places are disappearing faster than ever before. But dedicated people and organizations are working to reverse this trend and you can join them! This program will introduce issues facing wildlife around the world, highlight successful conservation programs, and focus on ways students can get involved at home or at school.
SC.7.E.6.6, SS.8.G.5.2, SC.912.L.15.3, SC.912.L.17.8, SC.912.L.17.16, SC.912.L.17.17, SC.912.L.17.20

9 - 12th Grades

Conservation Medicine

Conservation medicine is an emerging interdisciplinary field that studies the relationships between human and animal health and environmental conditions. During this program you will learn about our conservation medicine program and the work our Director of Conservation Medicine is doing in the zoo and beyond. (Does not include animals.)
SC.912.L.17.5, SC.912.L.17.8, SC.912.L.17.15, SC.912.L.17.17, SC.912.L.17.20, SC.912.N.2.4

Kingdoms & Conservation

Get an in-depth presentation on the classification of living things. Then, students will learn the role zoos play in wildlife conservation and actions they can take to become effective conservationists.
SC.912.L.15.4, SC.912.L.15.5, SC.912.L.15.6, SC.912.L.15.7, SC.912.L.17.8, SC.912.L.17.18, SC.912.L.17.20, SC.912.N.2.4

Zoo Careers

A summary of zoo careers such as veterinary medicine, animal care, and conservation education along with job requirements will be discussed, as well as the present-day mission of zoos. This presentation will be tailored to meet the specific interests of your students. Questions and discussion will be encouraged.
SC.912.L.17.8, SC.912.L.17.17, SC.912.L.17.20, SC.912.N.2.4, SS.912.E.1.5



Photo by Alan Weiner

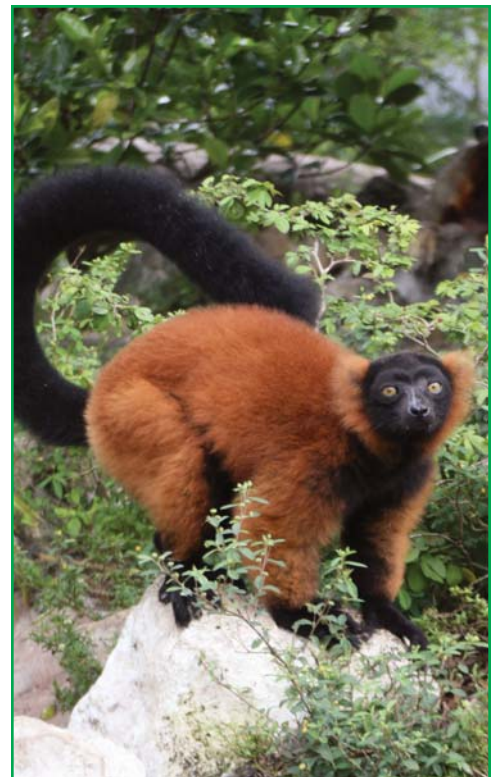


Photo by Keith Lovett

E-mail us at education@palmbeachzoo.org





GUIDED TOURS FOR GROUPS

Join us for one of the following guided tours listed below. Tours last approximately one hour and are led by one of our highly trained staff members or docents. You will meet your tour guide at the fountain 10 minutes before your scheduled tour time. You must have a minimum of 15 paying people in order to participate. Please note that guided tours will not cover the entire zoo.

Asia and Australia Tour - All Ages

This guided tour will leave you feeling like you have been to the Far East and Down Under all in one day. Guests will visit our koala couple from Queensland, tiger cubs from Malaysia and an Aussie favorite, the yellow-footed rock wallaby just to name a few.

SC.KL.14.3, SC.1.L.14.1, SC.2.L.17.2, SC.4.L.17.4, SC.5.L.17.1, SS.912.H.1.3, SS.912.H.1

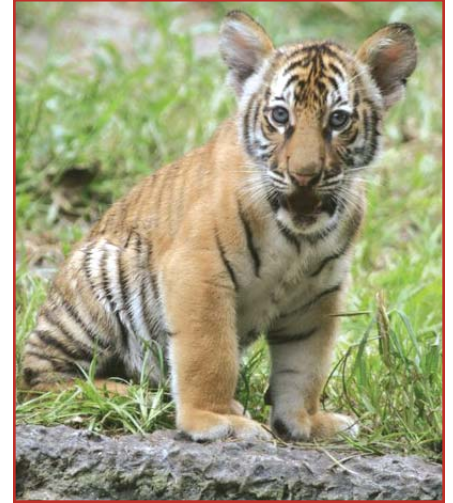


Photo by Keith Lovett

Animal Hospital Tour K – Adult

Take a behind-the-scenes tour of the Melvin J. and Claire Levine Animal Care Complex. During this unique experience you will visit all aspects of our animal hospital including our treatment room, surgical suite, radiology, laboratory, necropsy room, ICU and recovery rooms. This program will also provide participants with a better understanding of how the zoo manages veterinary care for over 1,400 animals at the zoo. *Please note: The Melvin J. and Claire Levine Animal Care Complex is not open to the public.*

SC.4.E.6.3, SC.4.E.6.6, SC.5.L.14.2, SC.912.L.17.8, SC.912.L.17.15, SC.912.L.17.17, SC.912.L.17.20

Tropics of the Americas, The Maya – All Ages

Come discover the Harriet W. and George D. Cornell Tropics of the Americas exhibit area! During your tour you will encounter jaguars, monkeys, giant anteaters and other tropical species, and you will explore a Mayan plaza complete with pyramids and hieroglyphs.

SC.KL.14.3, SC.1.L.14.1, SC.2.L.17.2, SC.4.L.17.4, SC.5.L.17.1, SS.912.H.1.3, SS.912.H.1.4

Florida Wildlife and Wetlands – All Ages

Come discover our native Florida exhibit area which includes a panther, bears, otters and much more. This tour will focus on our native wildlife and how we can help protect Florida's wild heritage.

SC.KL.14.3, SC.1.L.14.1, SC.2.L.17.2, SC.4.L.16.4, SC.4.L.17.1, SC.5.L.17.1, SC.7.E.6.6, SC.7.L.17.3, SC.912.L.17.8, SC.912.L.17.16, SC.912.L.17.20, SS.912.C.2.10

Green Building Tour 3rd – Adult

Tour our LEED-certified "green" building, the Melvin J. and Claire Levine Animal Care Complex. Learn about its "green" features and how this building was designed with the environment in mind. You will also learn about the zoo's "green" program and how you can "be green", too.

SC.4.E.6.3, SC.4.E.6.6, SC.4.L.17.4, SS.912.C.2.10, SC.912.E.6.6, SC.912.L.17.11, SC.912.L.17.15, SC.912.L.17.17, SC.912.L.17.20

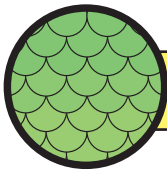


TEACHER WORKSHOPS

The Palm Beach Zoo offers teacher in-service credit workshops throughout the year. Workshops are held at the zoo or they may be presented at your facility, if you have a group of 15 or more people. To schedule a workshop, be placed on our mailing list, or for more information, please email us at education@palmbeachzoo.org.



Visit us at www.palmbeachzoo.org



FAMILY PROGRAMS

The education department offers a variety of programs for all ages throughout the year. For information regarding any of the programs listed below please visit our web site: www.palmbeachzoo.org. Please note that all education programs require advance registration.

Behind-the-Scenes Tours

If you want to see more of the Palm Beach Zoo please join us for a private Behind-the-Scenes Adventure Tour! All tours also include a hands-on opportunity with one of our animal ambassadors. Please select from the following tour choices:



Animal Hospital Tour

Visit the Melvin J. and Claire Levine Animal Care Complex including necropsy, animal holding areas, treatment, radiology, surgery, and laboratory. You will also learn about the "green" features that make this complex a certified LEED "green" building.



Tropics of the Americas Tour

Join zoo staff on a guided tour of this amazing tropical exhibit which includes a behind-the-scenes look at our jaguar exhibit.



Florida Wildlife Tour

Journey through our Florida exhibit and learn about the importance of native wildlife. The highlight of this experience will be a behind-the-scenes visit of the black bear exhibit.



Asia and Australia Tour

Discover wildlife of Asia and Australia on this guided zoo adventure. Guests will also experience a unique behind-the-scenes tour of the tiger exhibit.

Children's Workshops

The zoo offers exciting workshops designed for children ages 2 - 7 years old. Workshops are held in the classroom and include hands-on animal encounters, stories, snack, song, craft-time, and admission to the zoo. A parent(s) or guardian(s) is required to attend this program with participant. Programs last for one to one and a half hours.

Home School Classes

The Palm Beach Zoo is proud to offer home school classes for students throughout Palm Beach, Martin and Broward Counties. Students will explore a variety of topics through up-close animal investigation experiences. These classes are designed to provide an interactive approach to animal and life sciences. Classes are offered in the spring and fall of each year.

Night Owls Overnight Adventure

Discover the zoo after hours and meet our creatures of the night! This program is ideal for school groups, scout groups, community organizations and families. Participants enjoy animal encounters, a night tour of the zoo, snack, continental breakfast and wild activities! For more information visit our web site: www.palmbeachzoo.org. Please note that all overnight programs must be reserved in advance. This program is designed for participants ages 6 and over.



E-mail us at education@palmbeachzoo.org



Attention Teachers: Visit our web site to sign up for your **FREE** annual Teacher Membership to the zoo.*

*Restrictions apply



Let the zoo come to you!

The new Ed Morse ZOOmobile is on the road! Register today for the ZOOmobile to visit your school, summer camp, or special event with education programs and animals from the zoo.



Follow us on: [f](#) [t](#) [twitpic](#) [p](#) [y](#) [v](#) [in](#)



Zoological Society of the Palm Beaches, Inc.
1301 Summit Boulevard
West Palm Beach, Florida 33405-3035